



EST. 1798

**J. Gibson McIlvain Co.**

FINE IMPORTED & DOMESTIC WOOD PRODUCTS



**ALPHA**

BY J. GIBSON McILVAIN CO.

The A-List Finished Wood Products

**KONA**

**HORIZONS COLLECTION**

Manufactured from Jatoba, Kona has a medium variability in appearance. The material is sourced with sustainable methods from Brazil and is widely known in America as "Brazilian Cherry". This product is utilized in exterior applications primarily for decking, but can be moulded to cladding profiles as well. FSC Material is available upon request for this look.

## TECH SPECS

**Janka Hardness:** 2690 lbs

**Fire Rating:** Class A

**Durability:** Class 1

**Movement:**

Radial Shrinkage: 3.8%

Tangential Shrinkage: 7.1%

**Grade:** FAS

**Finish:**

Oil-Based Wood Stabilizer

- Finished on 1 show face and sealed on back and sides unless otherwise noted

**VOC Range:** 215 g/L

**Width:** 4 - 6"

**Thickness:** 3/4 - 1"

**Length:** up to 18'

**Variability Score:** 3

For use in **exterior** applications

## INSTALLATION

Alpha Decking is compatible with the following installation methods:

- Clip Systems
- Hidden Fasteners
- Visible Fasteners

A proper acclimation period is required once material is received to ensure best results.

Decking should be installed on joists 16 inches on center, as per code.

## CARE & MAINTENANCE

Plan to inspect decking and cladding annually to determine if reapplication is needed. In shaded areas or ceiling/soffit applications, reapplication may not be as frequent. Please refer to our full [care & maintenance](#) instructions for more information.

## CERTIFICATIONS &

### LEED ELIGIBILITY

- **FSC** material\* available upon request
  - **LEED Eligibility:**
    - o 2 Points: MR7 Materials & Resources | Sourcing of Raw Materials
  - Other points available for site-specific attributes
- \*specifying FSC material may increase lead times and cost



BIM Objects are available on our website for all Alpha products. Please visit <http://www.mcilvain.com/bim-library> to download.



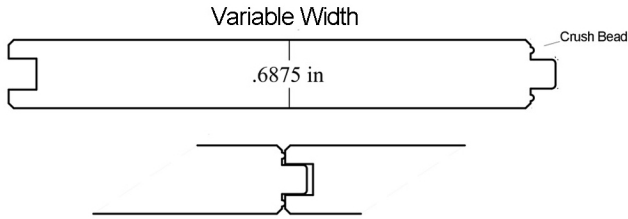
# ALPHA

BY J. GIBSON McILVAIN CO.

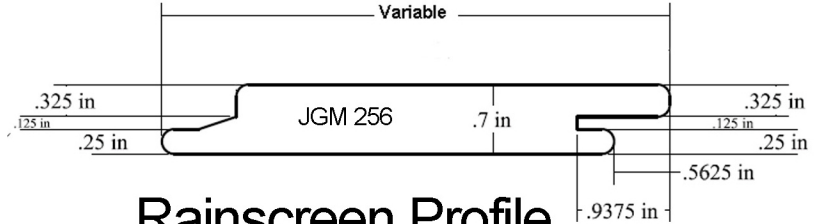
The A-List Finished Wood Products

These are the most common cladding and decking profiles we sell around the country. If additional looks are desired, please review our moulding library on our website to choose from thousands more.

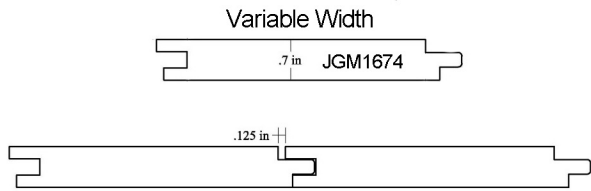
[www.mcilvain.com/millwork-service/moulding-profile-library/](http://www.mcilvain.com/millwork-service/moulding-profile-library/)



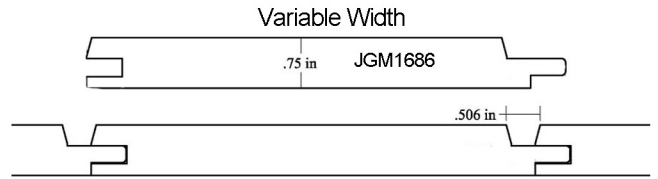
### T&G V Edge Crush Bead Profile



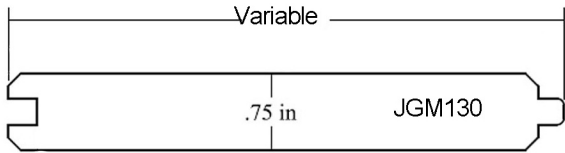
### Rainscreen Profile



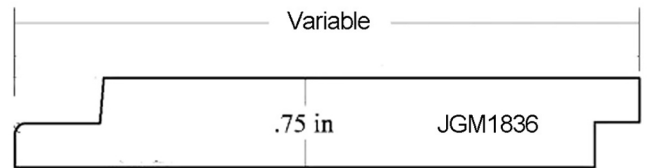
### T&G Nickel Gap



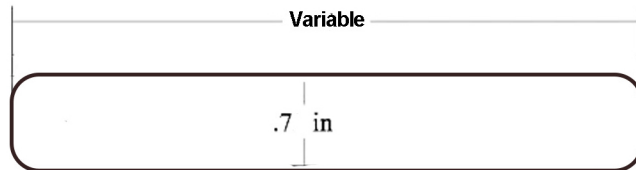
### T&G Channel Siding



### T&G V Edge Profile



### Shiplap Nickel Gap



### S4S Board Profile



## J. Gibson McIlvain Co.

FINE IMPORTED & DOMESTIC WOOD PRODUCTS

[www.mcilvain.com](http://www.mcilvain.com) | 800-638-9100